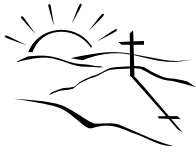


Psalm 46:1 "God Is Our Refuge And Strength, An Ever Present Help In Trouble."

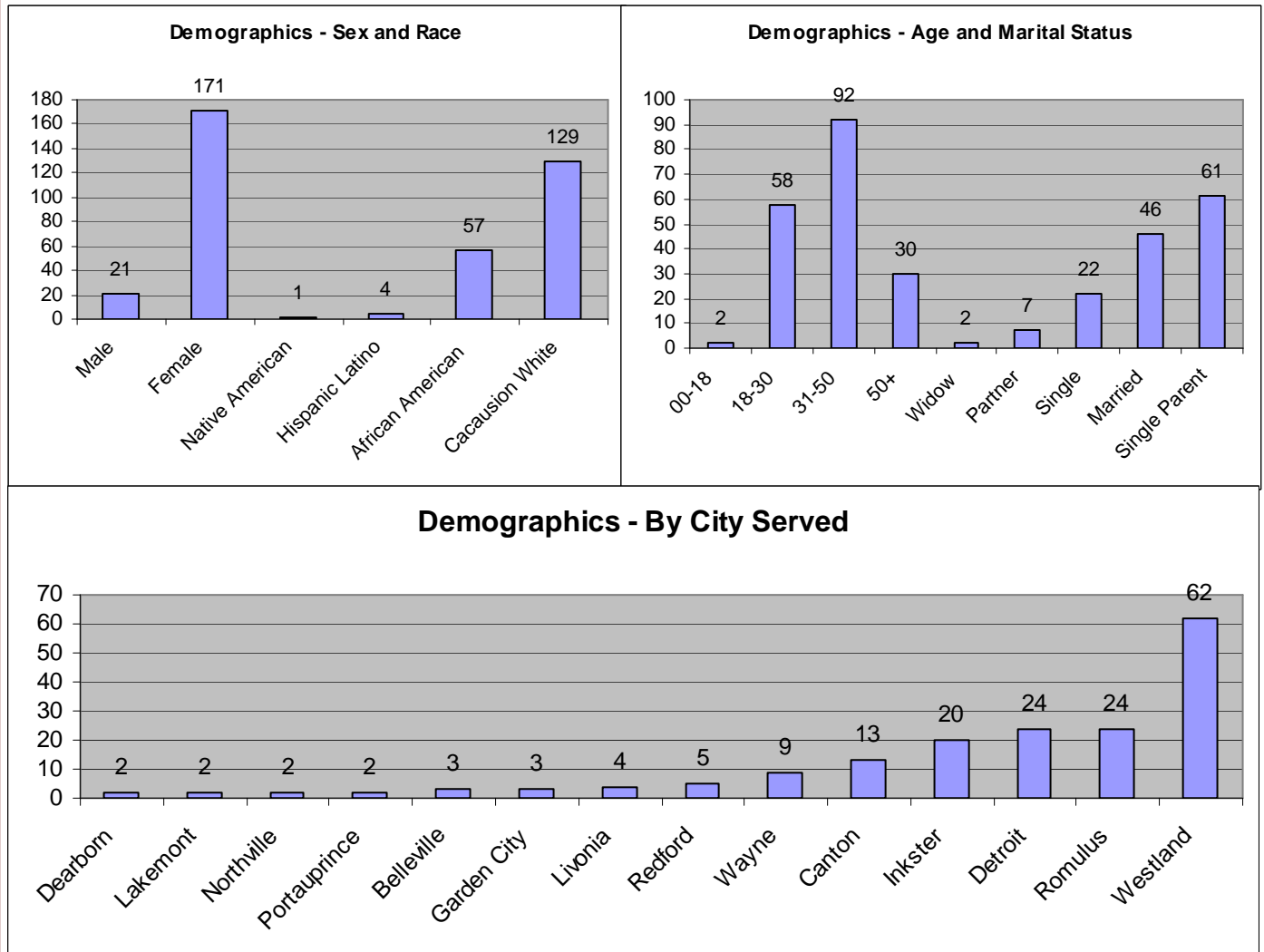


Help's On The Way

Issue 6 Fall 2003

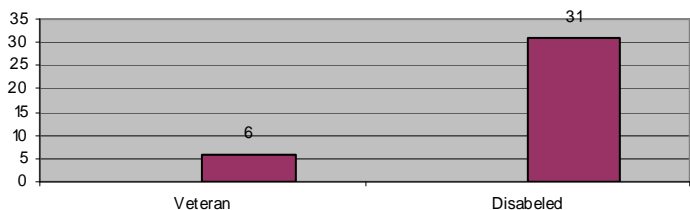
Happy Birthday!

October first 2003 marks our "official" two-year birthday as a non-profit organization. It may seem unusual to ask for birthday presents for Help's On The Way, however, we are asking for funding to help us continue our work. We are aware of "donor fatigue," many worthy organizations are asking for financial support and donors have only so much to give. Life is about choices, this article, and we hope the entire edition of this newsletter will help you decide to begin, or to continue, financially supporting our organization. We want to provide information about our organization, which will allow you to make an informed choice concerning financial support. Shown below and on the following pages are the demographics of the clients we serve.

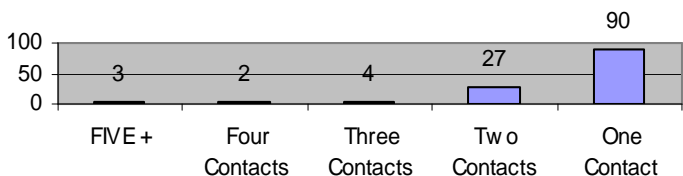


In addition to the cities shown in the above chart, our client base includes families from Dearborn Heights, Farmington, Oak Park, Saline and Ypsilanti, Michigan respectively.

Demographics - Veteran / Disabled



Frequency of Contacts



Military Service 4.68 percent of clients self-reported veteran status in the United States Armed Forces.

Disabled 23.66 percent of clients self-reported their physical status as being disabled.

Frequency of client contact As shown in the chart at left, the majority of clients had one contact with Help's On The Way during the two-year time period we have been collecting demographic data. As we continue to develop resources and strategies for our clients, we expect that we *may* begin to see a reduction in multiple contacts by individual clients.

Demographic Summary

An individual human being is never to be considered average. All of our clients are unique in personal experience, family structure, annual income, physical health, age and marital status. We can, however, develop a picture of the *typical* client that we serve. The majority of our clients are single-parent females with two children. She is Caucasian, thirty-one to fifty years of age, has a one-in-four chance of being disabled, and resides in Westland, Michigan

Children In the two-year time period that we have been collecting data, three hundred-nineteen children have been assisted by Help's On The Way.

That assistance has come in the form of clothing that has been donated to us which we have passed along to the children, or clothing, including shoes and boots that we have purchased when our supply of children's clothing was not adequate.

On occasion, we have made a determination to assist clients who are in danger of utility shut-offs, or eviction. As we make an assessment of the issues facing the client, the fact that they have children in the home weighs heavily upon our decision to help. Assisting clients financially is the exception rather than the rule, and **no direct cash payments are ever made to clients**, but are instead made directly to utilities, pharmacies, landlords and other service providers.

Kid's Korner We are striving to continually improve the room we have designated for children's services. Additional shelving and storage bins for children's clothing have been put in place, and space has been provided for toys and games that have been donated to the organization.



In a recent review of our client assessment form we realized that collecting additional information about the children we serve would better enable us to identify their needs. In light of that determination, we will begin collecting data that identifies the sex and age of each child.

Educating Parents As an organization, we feel we have an opportunity, and an obligation to educate and inform the parents, and grandparents we come in contact with. In light of that, we try to provide useful parenting information, both at our Client Services Center and by way of our newsletter. An article in this issue helps clients identify issues related to the development of children, with resources identified to assist parents and or grandparents in contacting

professionals in their community. Future articles related to children will provide information about childhood development through age five, and information that will be helpful to grandparents who are raising their grandchildren.

How we have been supported

Financially: Since the inception of Help's On The Way, the three men who founded the organization have supported the organization financially. Single Point Ministries of Ward Presbyterian Church in Northville, Michigan granted a sum of money to our organization to allow for the paving of our parking lot. Additionally, individual donors, business men and women, and professional organizations have supported us financially.

In kind support: We have been most fortunate to have both an Attorney and a Certified Public Accountant on our board of directors. Each of them has provided a great deal of pro-bono work for our organization.

Food support: Donations of food have come from individuals and from other various sources. Our largest contribution of food has come from, Curves of Plymouth, Michigan. Additionally, out of our general fund we purchase food every month to keep our shelves stocked for clients.

Clothing: It is not unusual to receive eight to ten large bags of clothing each week. In addition to the typical weekly donation of clothing, we have made it known to organizations and individuals that we were in need of specific types of clothing. These specific donations allowed us to provide three rescue missions with winter coats, and also made it possible to stock the Kid's Korner with clothing for infants and children.

Furniture and household appliances: Over the last two years, Help's On The Way has accepted donations of thirty beds, twenty washers and dryers and twenty-five refrigerators. In additions to these items, we have received a number of dining room sets, bedroom furniture, sofas, and couches.

Human Resources: Presently Help's On The Way has eight members on the board of directors. Additionally, three people from the community serve on our, Community Advisory Board. All of the work that is done to assist clients is accomplished by the board of directors and the Community Advisory Committee. That work consists of:

- Picking up donated appliances and furniture, which is later delivered to clients
- Sorting clothes by size and sex
- Performing client intake and assessment
- Editing, publishing and posting of the Help's On The Way Newsletter
- Shopping for and purchasing food
- Shopping for and purchasing children's clothing when necessary
- Maintaining our Client Services Center

We have no paid staff, all of this work is accomplished by volunteer effort. Our written policy strictly forbids any board member or Community Advisory Committee member from profiting in any way from action taken in the name of our organization. We are and will remain a not for profit organization.

Our Monthly Expenses

- \$700.00 per month mortgage on Client Services Center
- \$100.00 per month utilities on utilities at Client Services Center
- \$650.00 per month food purchase
- \$172.00 per month operating cost for delivery truck (insurance, plates and fuel)
- \$100.00 per month printing of newsletters, brochures and office supplies
- \$1,722.00 TOTAL monthly expenses**

Annual Expenses per donor of record

From the figures above, it can be seen that our annual expenses come to a little over twenty thousand dollars per year. We have on record, one hundred-forty financial donors.

\$20,000.00 divided by 140 = \$142.85 dollars per donor per year

Our Specific Funding Request

In addition to your planned donation for Fall of 2003 we are hoping that you will consider a regularly scheduled plan of giving that will enable us to continue the work we have

January 2004

Su	Mo	Tu	We	Th	Fr	Sa
					<u>1</u>	2 3
4	5	6	7	8	9	10
11	12	13	14	15	16	17
18	19	20	21	22	23	24
25	26	27	28	29	30	31

April 2004

Su	Mo	Tu	We	Th	Fr	Sa
					<u>1</u>	2 3
4	5	6	7	8	9	10
11	12	13	14	15	16	17
18	19	20	21	22	23	24
25	26	27	28	29	30	

July 2004

Su	Mo	Tu	We	Th	Fr	Sa
					<u>1</u>	2 3
4	5	6	7	8	9	10
11	12	13	14	15	16	17
18	19	20	21	22	23	24
25	26	27	28	29	30	31

October 2004

Su	Mo	Tu	We	Th	Fr	Sa
					<u>1</u>	2
3	4	5	6	7	8	9
10	11	12	13	14	15	16
17	18	19	20	21	22	23
24	25	26	27	28	29	30
31						

started in the communities we serve. We are asking each donor of record to contribute **thirty-six dollars per quarter**, with contributions beginning January 1, 2004. The calendar at left has dates that have been enlarged and underlined to serve as a reminder. Please place this calendar on your to do list bulletin board or tape it to your refrigerator. From all of us at Help's On The Way, and the clients we serve, thank you for your support and prayers.



Your Child's Development by Elaine Kremposky



Most parents wonder at times if their child is growing and learning like other children. Should my one-year-old be standing up by himself now? Why is my third-grader having trouble keeping up in class? My son or daughter doesn't seem to get along with the other kids. If you think that your child's growth, learning skills or social skills are not the same as those of other children the same age, the sooner you check it out the better. Your local public schools can help. They provide free information and evaluations to families whose children are infants through high school age. They will help you find free or low cost services in your area.

We want your children to have a great start in life. Call us. We're here to help.

If you live in **Wayne County**, call **Kim Kaminski**, at **734.334.1533**. Kim will refer you to a Coordinator in your local school area.

If you live in **Washtenaw County**, call **Janet Grand**, at **734.994.8100, extension 1534**. Janet will also connect you with a local school person who can talk with you and answer your questions.

Each child goes through developmental stages. Here are some tips to help you decide if you should ask for help.

At three months of age, does your baby: Roll from side to side? Laugh out loud? Smile when talked to?

Show interest in faces?

At six months of age, does your baby: Sit with a little help? Transfer objects from hand to hand, and hand to mouth? Like to be touched and held? Babble more than two sounds? Roll over?

At twelve months of age, does your baby: Pull self to a standing position? Take steps with support? Drink from a cup with help? Wave good bye? Pick up things with thumb and finger?

At eighteen months of age, does your baby: Walk? Enjoy pull toys? Enjoy being read to? Make a mark with crayon on paper?

At twenty-four months of age, does your toddler: Walk and run well? Handle a spoon well? Ask for things by name? Recognize a familiar picture?

At age three, does your child: Walk up stairs? Feed self? Open doors? Say she or he needs to use the potty?

At age four, does your child: Hop in place? Copy circles? Begin to play with other children? Use sentences with correct grammar?

At age five, does your child: Walk backward heel to toe? Recognize own printed name? Print a few capital letters? Play with others?

Elaine Kremposky is a Teacher Consultant at the Washtenaw Intermediate School District. Elaine has degrees in Education and Child Development from Michigan State University. She has over thirty years of experience in teaching preschool and special education classes. She currently supports children who have special needs and their teachers and families within Washtenaw County.

Mission Statement

"Help's On The Way," is a, non-profit 501 (C) (3) incorporated organization, that works to provide nutritional meals, clothing and household items to the community mission field. We define the community mission field, simply as, 'all of God's children.'

Mission Project

Our current mission project is the establishment of a facility that will meet the needs of the community as defined above. This building is located at 5358 South Beech Daly Road, in Dearborn Heights, Michigan.

Our Vision

With God's grace, Godly inspired leadership, and the assistance of volunteers, both near and far, we hope to accomplish the following:

- Feed and or provide food to those in need.
- Develop and administer a, "clothes closet," again, for those in need.
- The collection of donated household items, and the distribution and delivery of household items

Help's On The Way Corporate Office

6784 Edwards

Belleville, Michigan 48111-1136

734.699.8656

IRS Identification Number 38—3590783

Corporation Officers

President and CEO—Mike Howard Vice President—Jim Kelly Secretary/Treasurer—Jack Schmitt

Board Members:

Elizabeth Bennett—Underwriter, National City Mortgage

Frank Housholder—President, Frank Housholder PC

Mike Howard—Forgotten Harvest

Jim Kelly—President, Kelly Window & Door

Kathleen Oemke—JD, Livingston County Friend of the Court

Jack Schmitt—President, Jack's House Construction Company LLC

Shannon Schmitt—Registered Nurse, CDE, Sinai Grace Hospital

Bill Swift—Visteon Automotive

Community Advisory Committee:

Lisa Cashero—Ward Evangelical Presbyterian Church

Helen Davis — A.W.W.

Molly Malpass-Wayne Westland Schools, Social Services / Parent Involvement Coordinator

Our Client Services Center is located at 5358 South Beech Daly Road in, Dearborn Heights, Michigan, one and one-half miles south of Michigan Avenue. We are open for client intake on Thursday afternoons. Hours are five to eight-thirty pm. Additionally, phone messages may be left by way of voice mail at any time. Please call **734.776.3184** to speak to a volunteer on Thursday afternoons, or to leave a message at other times.